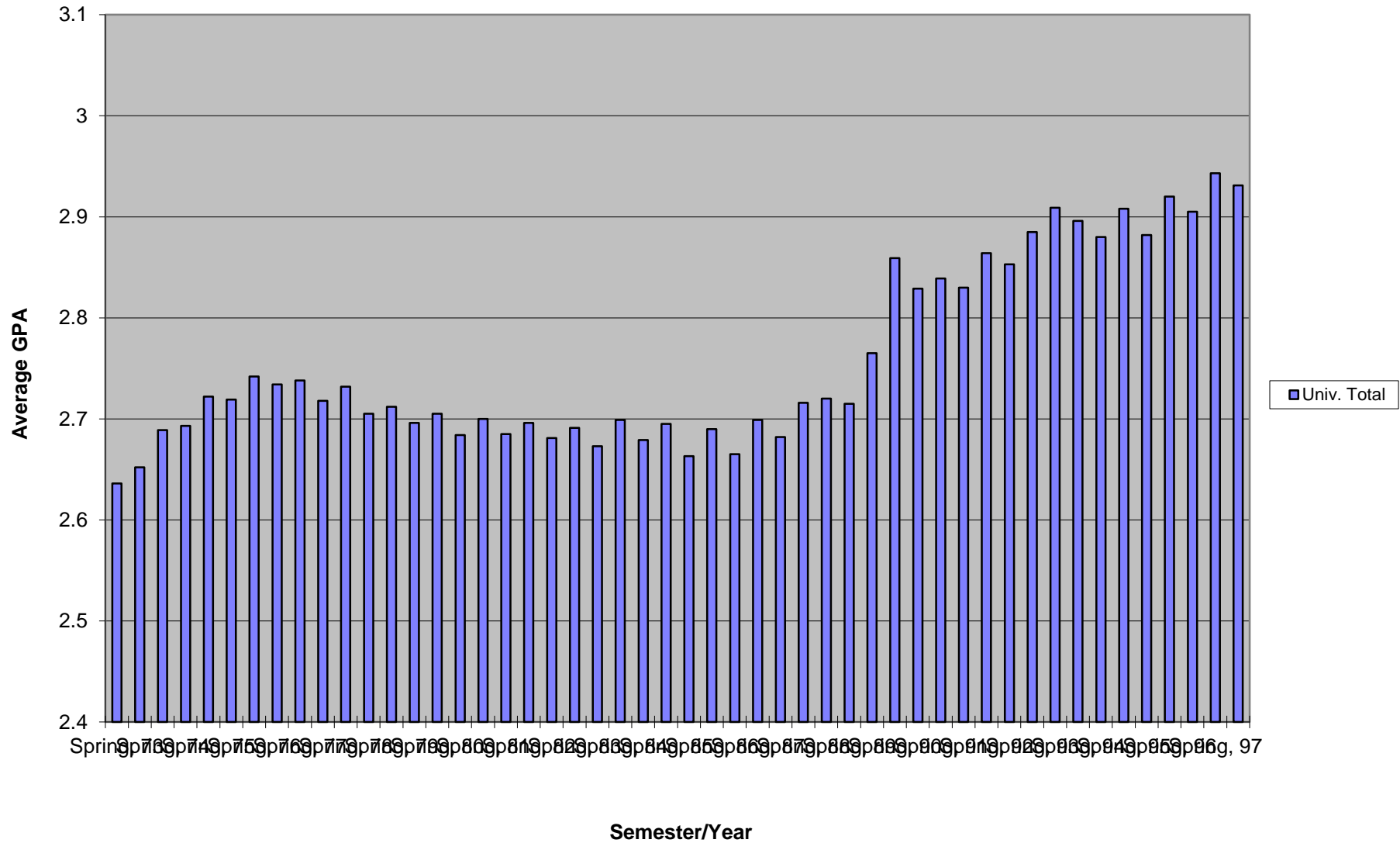
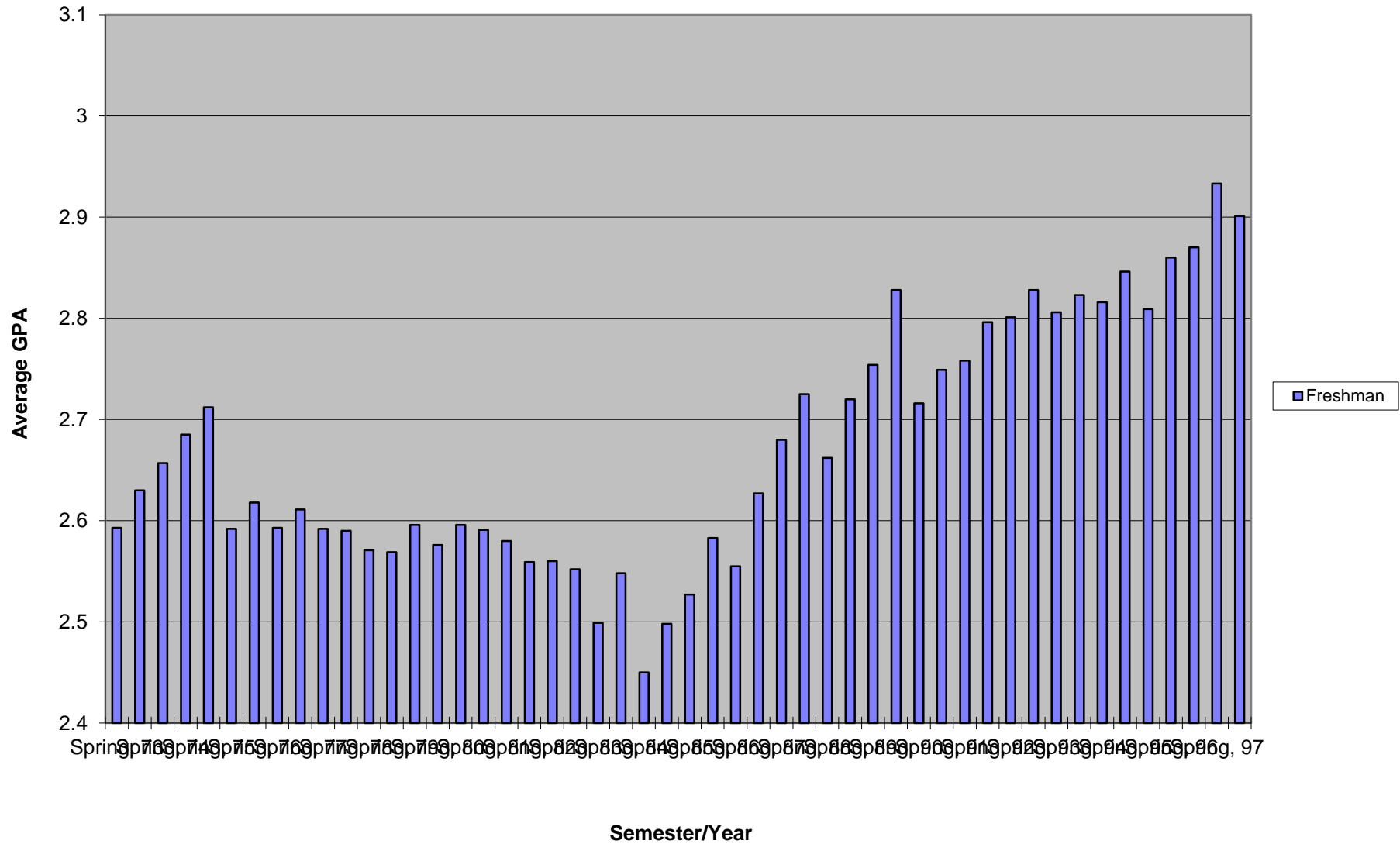


University Total GPA: 1973 to 1997

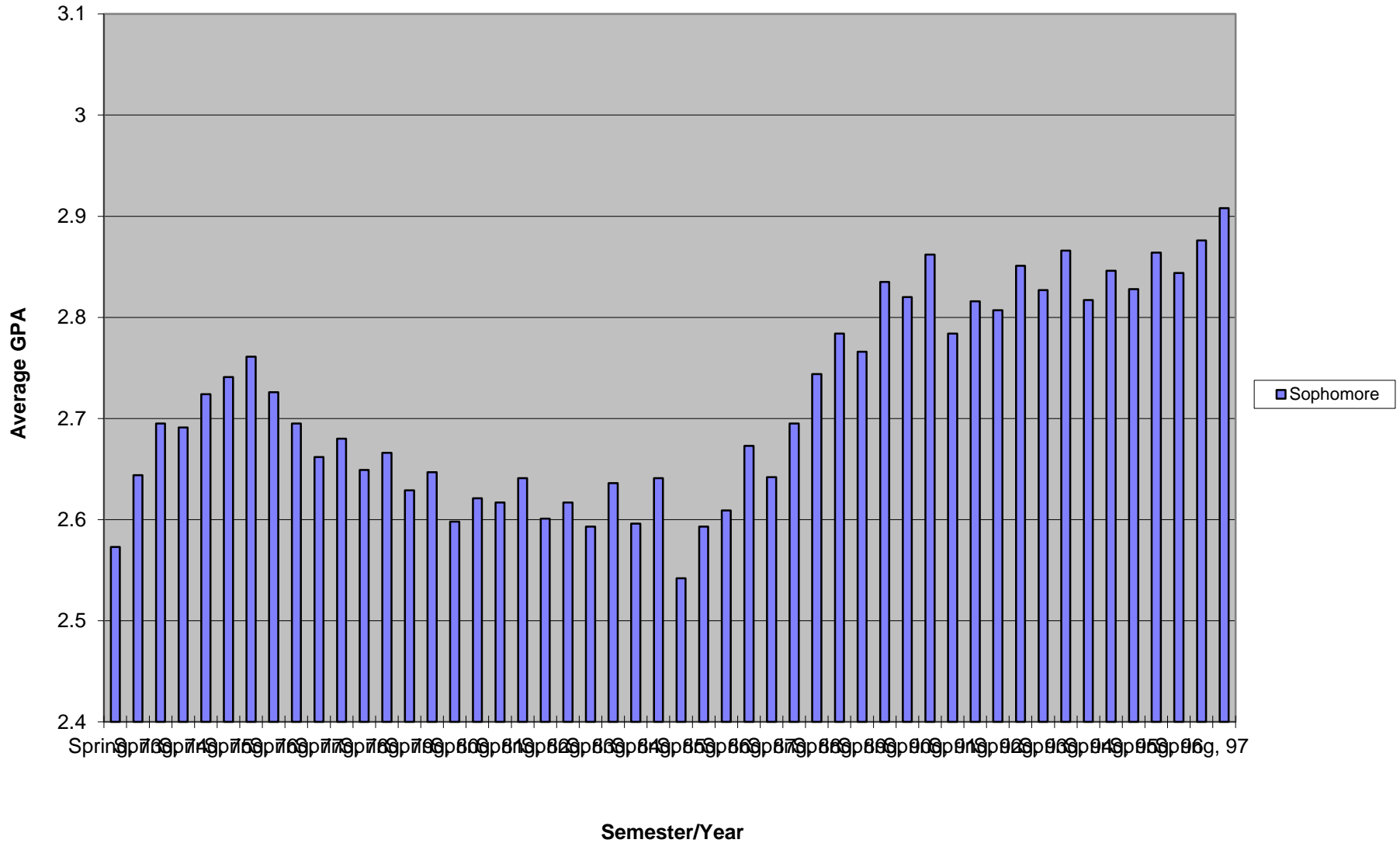


Freshman Average GPA, 1973 to 1997

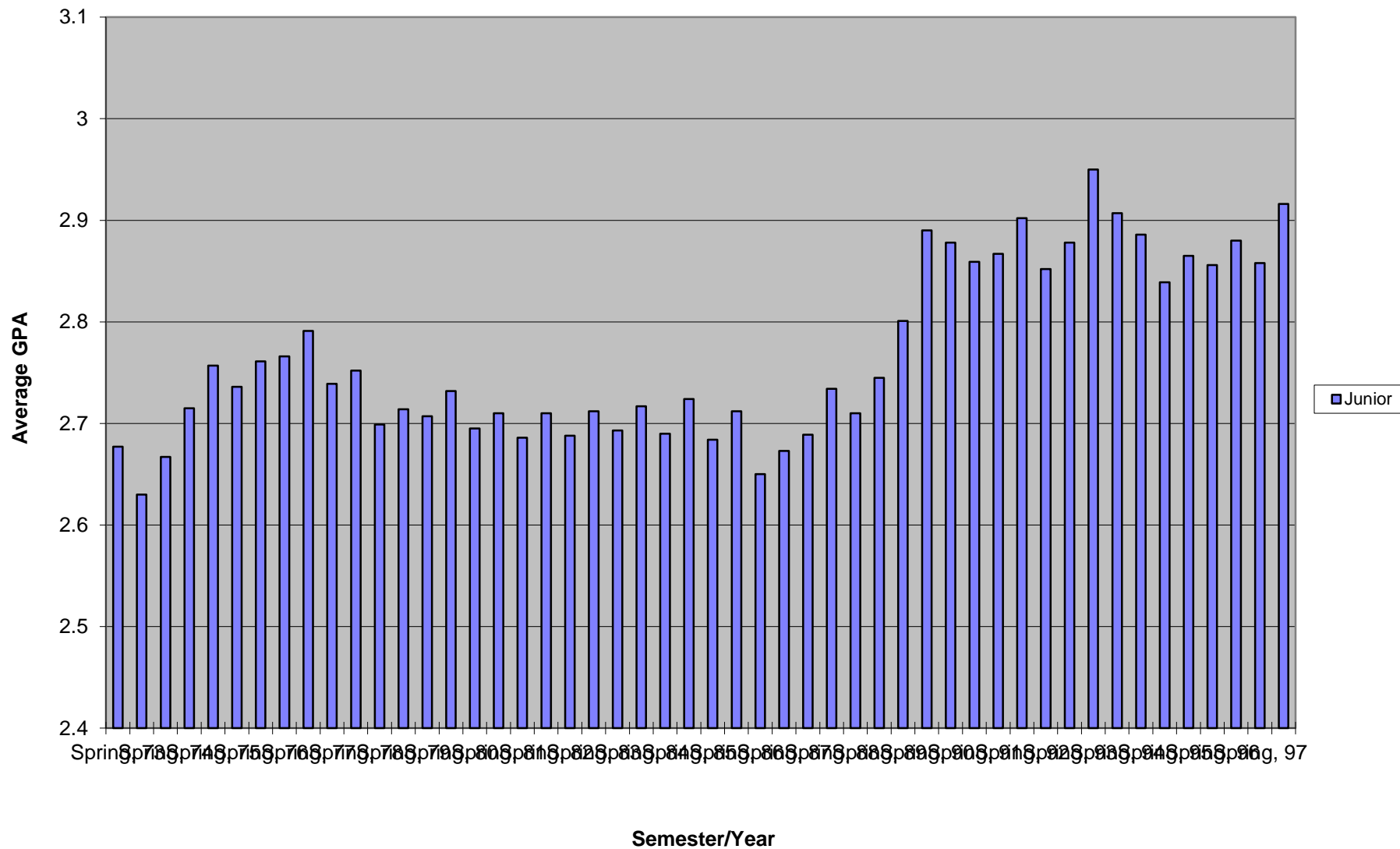


Sophomore

Sophomore Average GPA, 1973 to 1997

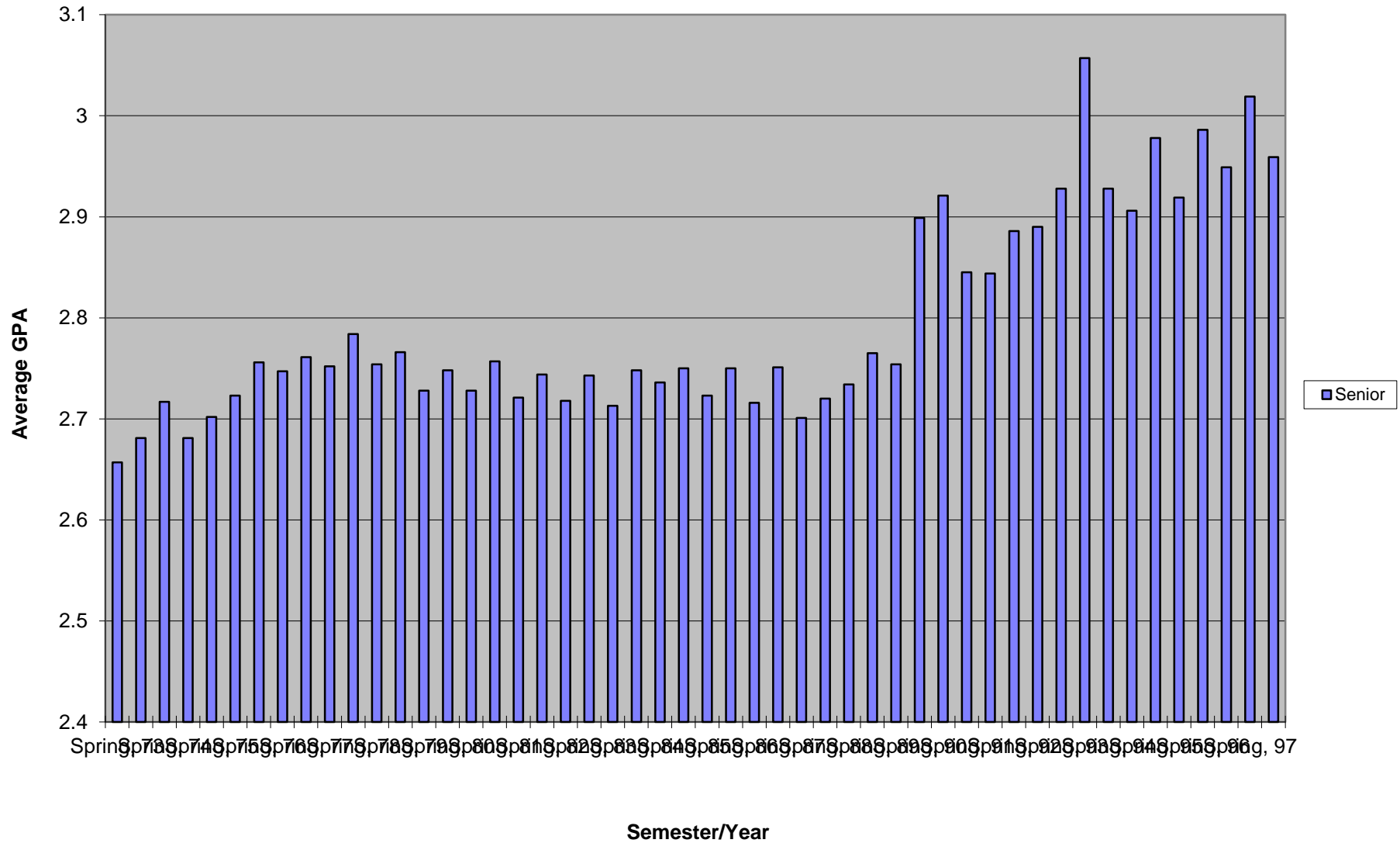


Junior Average GPA, 1973 to 1997

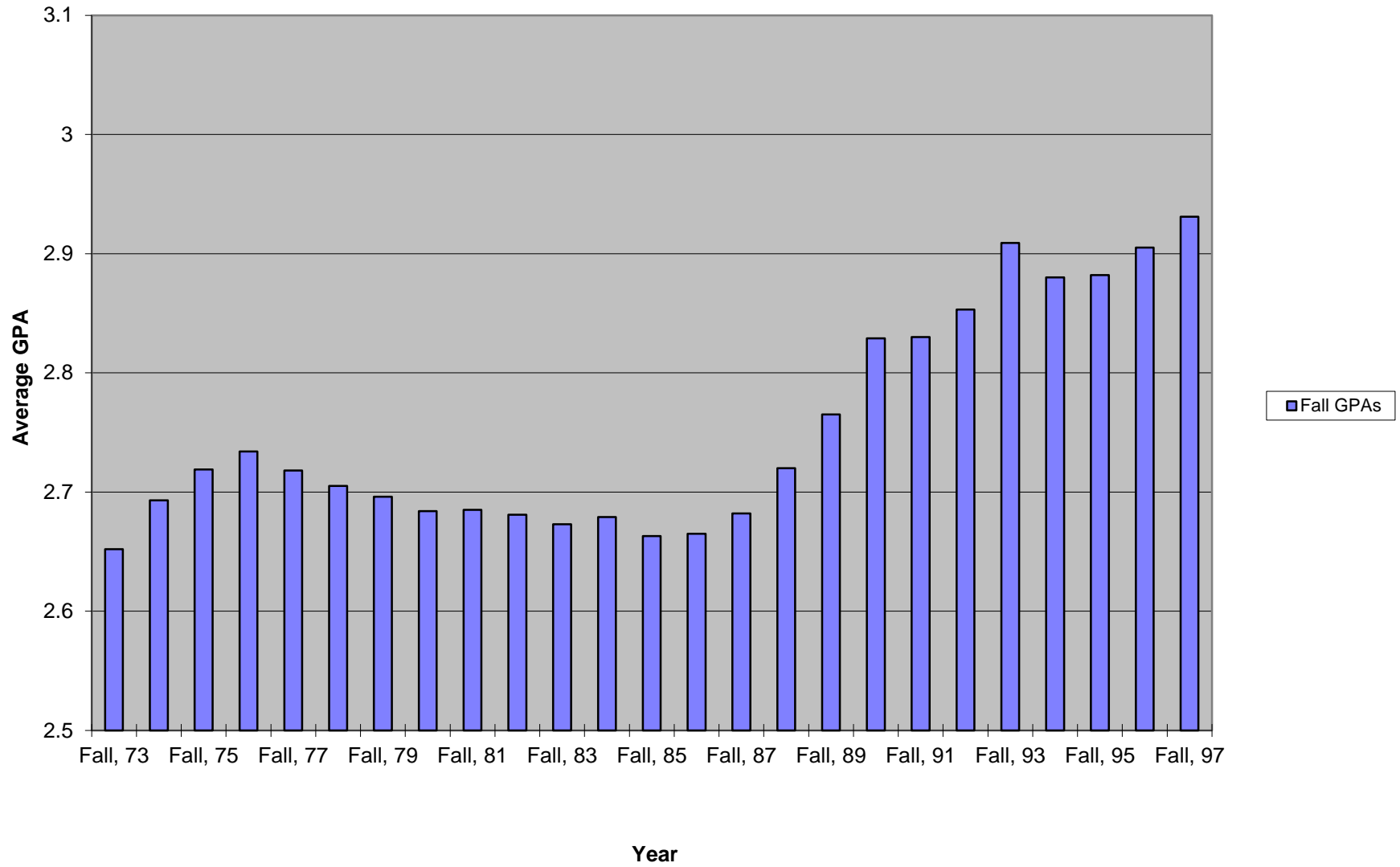


Senior

Senior Average GPA, 1973 to 1997



University Totals, Fall Semesters, 1973 to 1997



Fall data

Fall, 73	2.63	2.644	2.63	2.681	2.652
Fall, 74	2.685	2.691	2.715	2.681	2.693
Fall, 75	2.592	2.741	2.736	2.723	2.719
Fall, 76	2.593	2.726	2.766	2.747	2.734
Fall, 77	2.592	2.662	2.739	2.752	2.718
Fall, 78	2.571	2.649	2.699	2.754	2.705
Fall, 79	2.596	2.629	2.707	2.728	2.696
Fall, 80	2.596	2.598	2.695	2.728	2.684
Fall, 81	2.58	2.617	2.686	2.721	2.685
Fall, 82	2.56	2.601	2.688	2.718	2.681
Fall, 83	2.499	2.593	2.693	2.713	2.673
Fall, 84	2.45	2.596	2.69	2.736	2.679
Fall, 85	2.527	2.542	2.684	2.723	2.663
Fall, 86	2.555	2.609	2.65	2.716	2.665
Fall, 87	2.68	2.642	2.689	2.701	2.682
Fall, 88	2.662	2.744	2.71	2.734	2.72
Fall, 89	2.754	2.766	2.801	2.754	2.765
Fall, 90	2.716	2.82	2.878	2.921	2.829
Fall, 91	2.758	2.784	2.867	2.844	2.83
Fall, 92	2.801	2.807	2.852	2.89	2.853
Fall, 93	2.806	2.827	2.95	3.057	2.909
Fall, 94	2.816	2.817	2.886	2.906	2.88
Fall, 95	2.809	2.828	2.865	2.919	2.882
Fall, 96	2.87	2.844	2.88	2.949	2.905
Fall, 97	2.901	2.908	2.916	2.959	2.931

Chart3

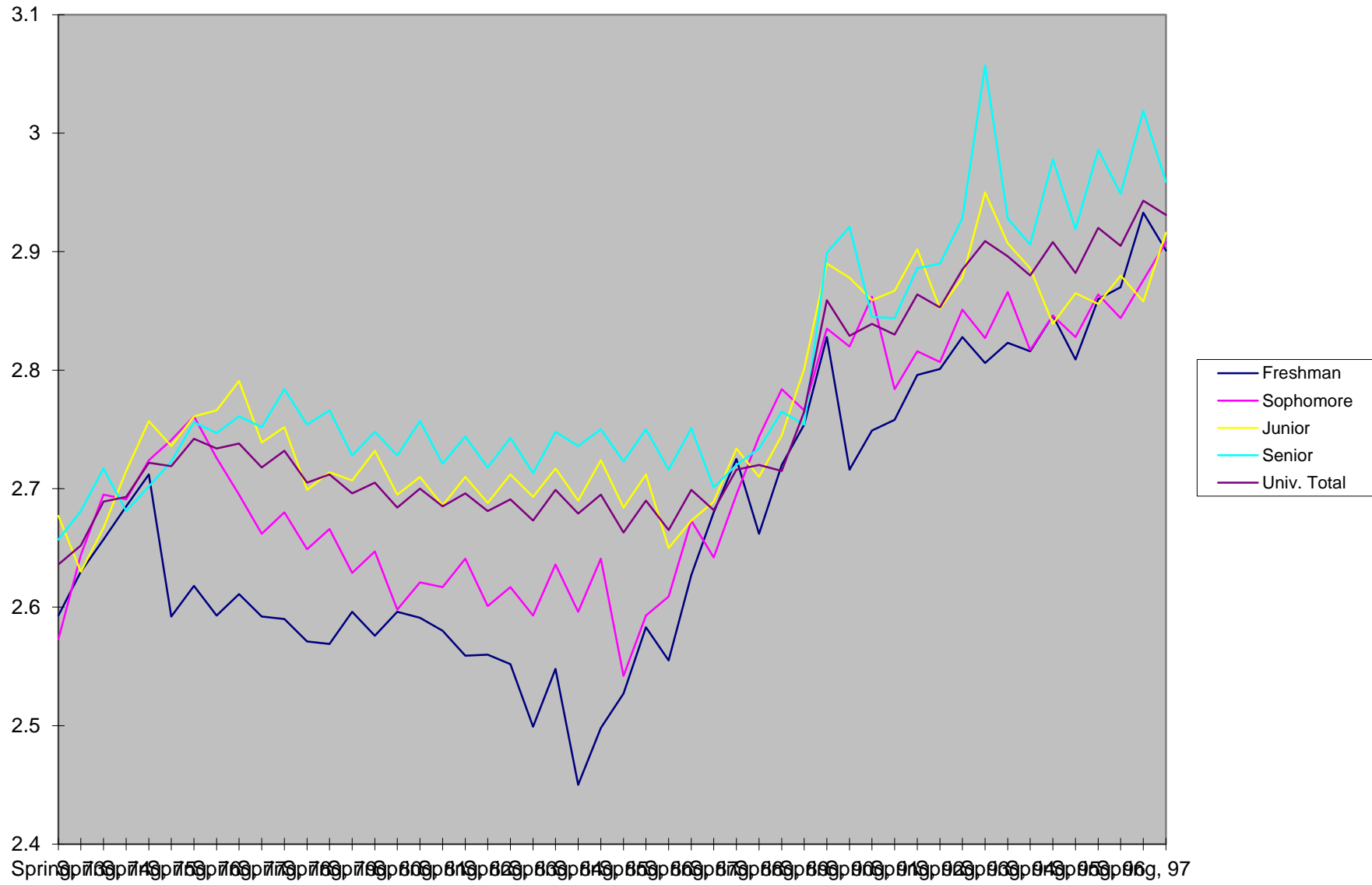
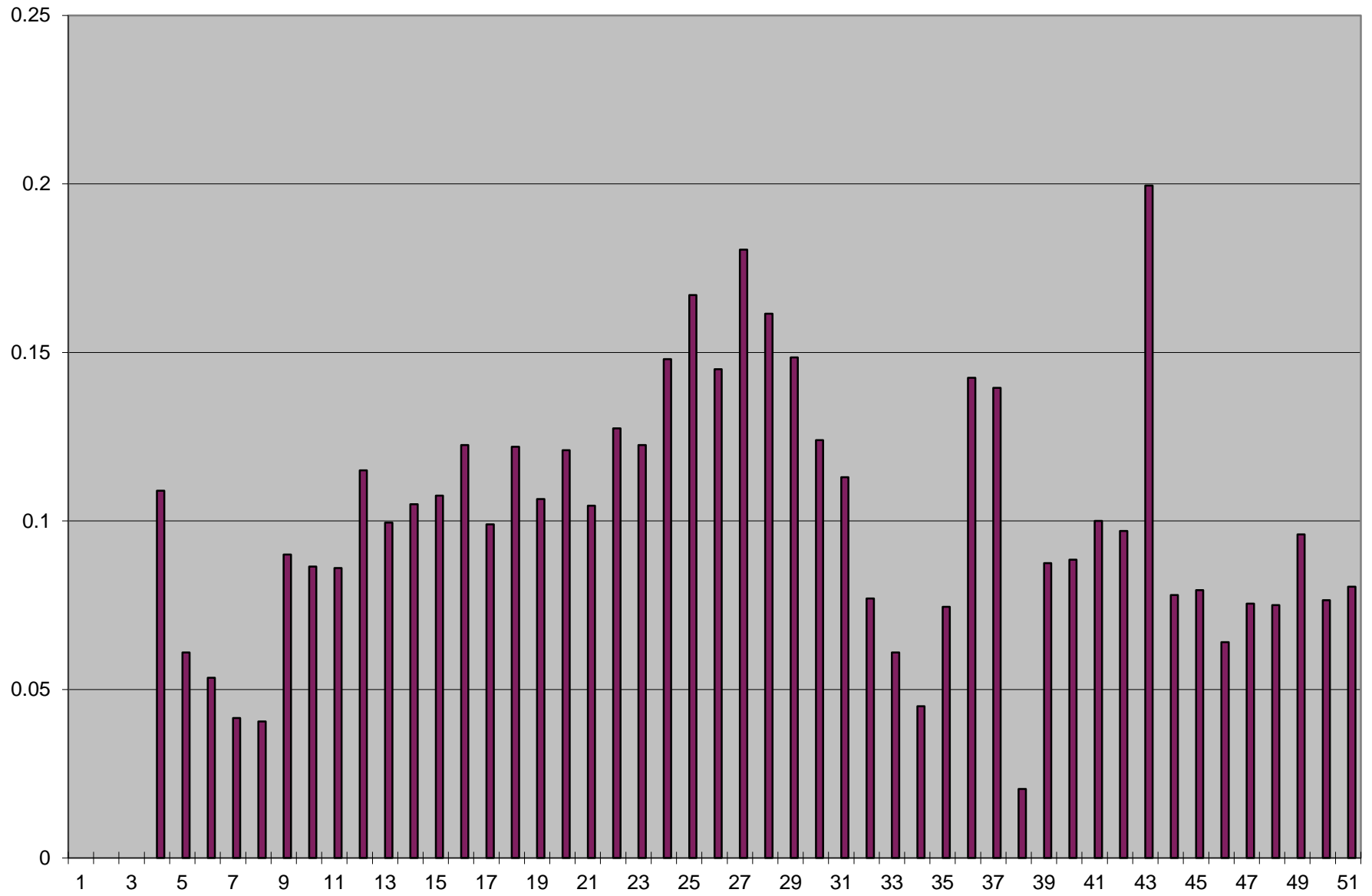


Chart1



Data 1

	Freshman	Sophomor	Junior	Senior	Univ. Total	jrjvssr	srvsfr	frsoph	jrjr	lovsup
Spring, 73	2.593	2.573	2.677	2.657	2.636	-0.02	0.064	2.583	2.667	
Fall, 73	2.63	2.644	2.63	2.681	2.652	0.051	0.051	2.637	2.6555	
Spring, 74	2.657	2.695	2.667	2.717	2.689	0.05	0.06	2.676	2.692	0.109
Fall, 74	2.685	2.691	2.715	2.681	2.693	-0.034	-0.004	2.688	2.698	0.061
Spring, 75	2.712	2.724	2.757	2.702	2.722	-0.055	-0.01	2.718	2.7295	0.0535
Fall, 75	2.592	2.741	2.736	2.723	2.719	-0.013	0.131	2.6665	2.7295	0.0415
Spring, 76	2.618	2.761	2.761	2.756	2.742	-0.005	0.138	2.6895	2.7585	0.0405
Fall, 76	2.593	2.726	2.766	2.747	2.734	-0.019	0.154	2.6595	2.7565	0.09
Spring, 77	2.611	2.695	2.791	2.761	2.738	-0.03	0.15	2.653	2.776	0.0865
Fall, 77	2.592	2.662	2.739	2.752	2.718	0.013	0.16	2.627	2.7455	0.086
Spring, 78	2.59	2.68	2.752	2.784	2.732	0.032	0.194	2.635	2.768	0.115
Fall, 78	2.571	2.649	2.699	2.754	2.705	0.055	0.183	2.61	2.7265	0.0995
Spring, 79	2.569	2.666	2.714	2.766	2.712	0.052	0.197	2.6175	2.74	0.105
Fall, 79	2.596	2.629	2.707	2.728	2.696	0.021	0.132	2.6125	2.7175	0.1075
Spring, 80	2.576	2.647	2.732	2.748	2.705	0.016	0.172	2.6115	2.74	0.1225
Fall, 80	2.596	2.598	2.695	2.728	2.684	0.033	0.132	2.597	2.7115	0.099
Spring, 81	2.591	2.621	2.71	2.757	2.7	0.047	0.166	2.606	2.7335	0.122
Fall, 81	2.58	2.617	2.686	2.721	2.685	0.035	0.141	2.5985	2.7035	0.1065
Spring, 82	2.559	2.641	2.71	2.744	2.696	0.034	0.185	2.6	2.727	0.121
Fall, 82	2.56	2.601	2.688	2.718	2.681	0.03	0.158	2.5805	2.703	0.1045
Spring, 83	2.552	2.617	2.712	2.743	2.691	0.031	0.191	2.5845	2.7275	0.1275
Fall, 83	2.499	2.593	2.693	2.713	2.673	0.02	0.214	2.546	2.703	0.1225
Spring, 84	2.548	2.636	2.717	2.748	2.699	0.031	0.2	2.592	2.7325	0.148
Fall, 84	2.45	2.596	2.69	2.736	2.679	0.046	0.286	2.523	2.713	0.167
Spring, 85	2.498	2.641	2.724	2.75	2.695	0.026	0.252	2.5695	2.737	0.145
Fall, 85	2.527	2.542	2.684	2.723	2.663	0.039	0.196	2.5345	2.7035	0.1805
Spring, 86	2.583	2.593	2.712	2.75	2.69	0.038	0.167	2.588	2.731	0.1615
Fall, 86	2.555	2.609	2.65	2.716	2.665	0.066	0.161	2.582	2.683	0.1485
Spring, 87	2.627	2.673	2.673	2.751	2.699	0.078	0.124	2.65	2.712	0.124
Fall, 87	2.68	2.642	2.689	2.701	2.682	0.012	0.021	2.661	2.695	0.113
Spring, 88	2.725	2.695	2.734	2.72	2.716	-0.014	-0.005	2.71	2.727	0.077
Fall, 88	2.662	2.744	2.71	2.734	2.72	0.024	0.072	2.703	2.722	0.061
Spring, 89	2.72	2.784	2.745	2.765	2.715	0.02	0.045	2.752	2.755	0.045
Fall, 89	2.754	2.766	2.801	2.754	2.765	-0.047	0	2.76	2.7775	0.0745
Spring, 90	2.828	2.835	2.89	2.899	2.859	0.009	0.071	2.8315	2.8945	0.1425
Fall, 90	2.716	2.82	2.878	2.921	2.829	0.043	0.205	2.768	2.8995	0.1395

Data 1

Spring, 91	2.749	2.862	2.859	2.845	2.839	-0.014	0.096	2.8055	2.852	0.0205
Fall, 91	2.758	2.784	2.867	2.844	2.83	-0.023	0.086	2.771	2.8555	0.0875
Spring, 92	2.796	2.816	2.902	2.886	2.864	-0.016	0.09	2.806	2.894	0.0885
Fall, 92	2.801	2.807	2.852	2.89	2.853	0.038	0.089	2.804	2.871	0.1
Spring, 93	2.828	2.851	2.878	2.928	2.885	0.05	0.1	2.8395	2.903	0.097
Fall, 93	2.806	2.827	2.95	3.057	2.909	0.107	0.251	2.8165	3.0035	0.1995
Spring, 94	2.823	2.866	2.907	2.928	2.896	0.021	0.105	2.8445	2.9175	0.078
Fall, 94	2.816	2.817	2.886	2.906	2.88	0.02	0.09	2.8165	2.896	0.0795
Spring, 95	2.846	2.846	2.839	2.978	2.908	0.139	0.132	2.846	2.9085	0.064
Fall, 95	2.809	2.828	2.865	2.919	2.882	0.054	0.11	2.8185	2.892	0.0755
Spring, 96	2.86	2.864	2.856	2.986	2.92	0.13	0.126	2.862	2.921	0.075
Fall, 96	2.87	2.844	2.88	2.949	2.905	0.069	0.079	2.857	2.9145	0.096
Spring, 97	2.933	2.876	2.858	3.019	2.943	0.161	0.086	2.9045	2.9385	0.0765
Fall, 97	2.901	2.908	2.916	2.959	2.931	0.043	0.058	2.9045	2.9375	0.0805

Spring Data

Spring, 73	2.593	2.573	2.677	2.657	2.636
Spring, 74	2.657	2.695	2.667	2.717	2.689
Spring, 75	2.712	2.724	2.757	2.702	2.722
Spring, 76	2.618	2.761	2.761	2.756	2.742
Spring, 77	2.611	2.695	2.791	2.761	2.738
Spring, 78	2.59	2.68	2.752	2.784	2.732
Spring, 79	2.569	2.666	2.714	2.766	2.712
Spring, 80	2.576	2.647	2.732	2.748	2.705
Spring, 81	2.591	2.621	2.71	2.757	2.7
Spring, 82	2.559	2.641	2.71	2.744	2.696
Spring, 83	2.552	2.617	2.712	2.743	2.691
Spring, 84	2.548	2.636	2.717	2.748	2.699
Spring, 85	2.498	2.641	2.724	2.75	2.695
Spring, 86	2.583	2.593	2.712	2.75	2.69
Spring, 87	2.627	2.673	2.673	2.751	2.699
Spring, 88	2.725	2.695	2.734	2.72	2.716
Spring, 89	2.72	2.784	2.745	2.765	2.715
Spring, 90	2.828	2.835	2.89	2.899	2.859
Spring, 91	2.749	2.862	2.859	2.845	2.839
Spring, 92	2.796	2.816	2.902	2.886	2.864
Spring, 93	2.828	2.851	2.878	2.928	2.885
Spring, 94	2.823	2.866	2.907	2.928	2.896
Spring, 95	2.846	2.846	2.839	2.978	2.908
Spring, 96	2.86	2.864	2.856	2.986	2.92
Spring, 97	2.933	2.876	2.858	3.019	2.943